

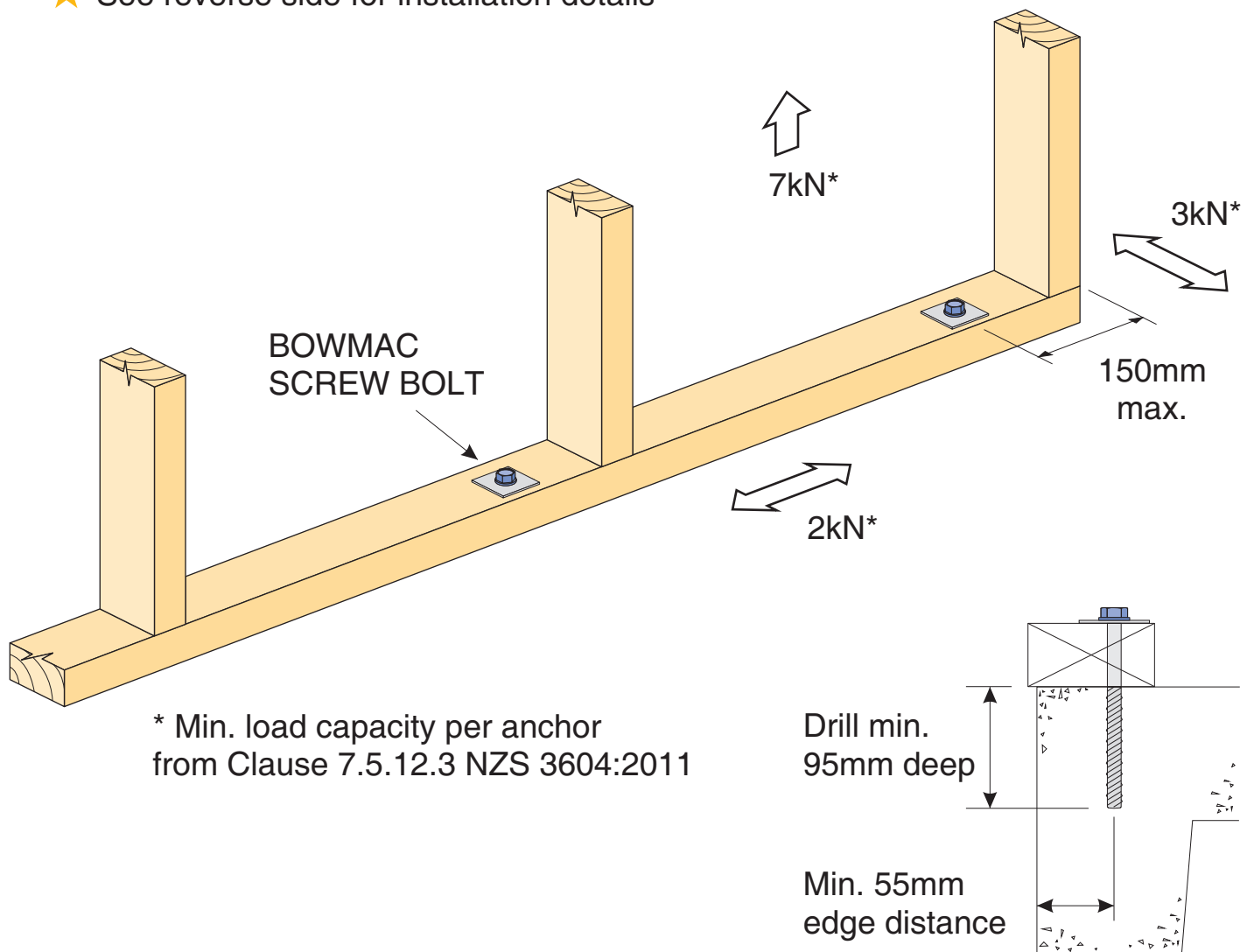


# BOWMAC®

04/2013

## BOTTOM PLATE SCREW BOLT M10 X 140 BOWMAC BLUE HEAD

- ★ Complies with Clause 7.5.12.2 NZS 3604:2011 Proprietary Post Fixed Anchors
- ★ BRANZ tested. Ref# ST0895 Oct. 2012
- ★ Suitable for both external and internal wall frame anchor to concrete slab or masonry header blocks
- ★ Complies with durability requirements for "All Zones" in a "CLOSED" environment as defined in Table 4.1 NZS 3604:2011
- ★ See reverse side for installation details

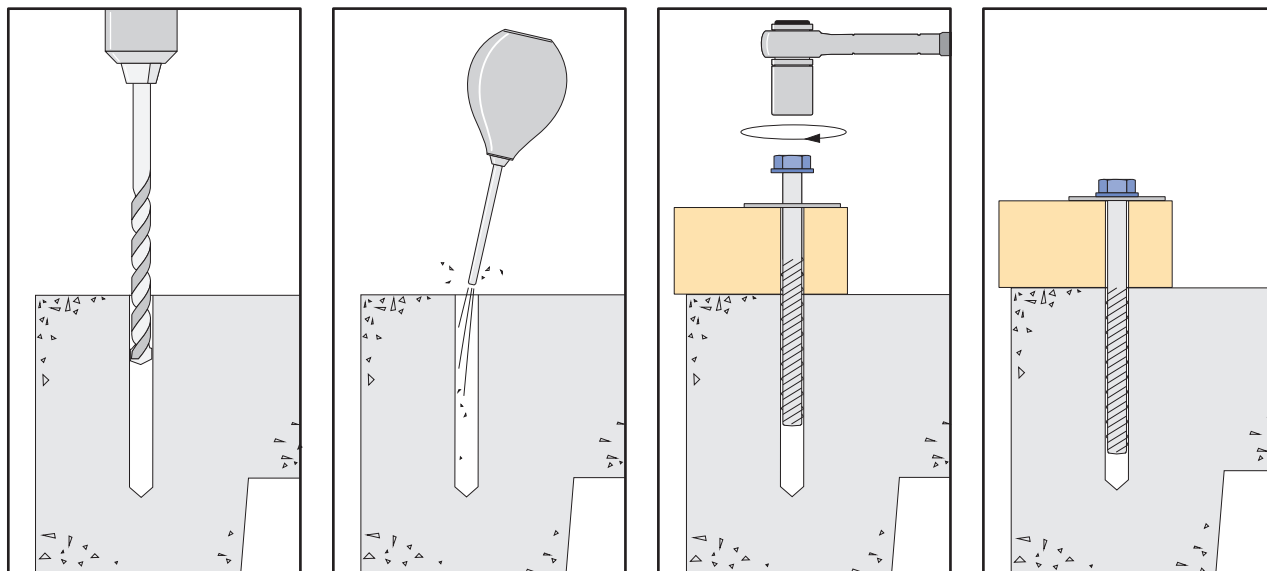


**Available from leading Builders Supply Merchants  
throughout New Zealand**



## Installation Details

- ★ Install BOWMAC SCREW BOLT and washer supplied to concrete slabs at 900mm max. crs., or 600mm max. crs. when using masonry header blocks.
- ★ SCREW BOLT must be located within 150mm from end of timber wall frame.



- Use a 10mm diameter masonry bit for drilling into concrete substrate.
- Drill a hole into the concrete base to a minimum depth of 95mm and clean out dust and debris from hole prior to installation of BOWMAC SCREW BOLT.
- Insert SCREW BOLT through washer and timber and into the hole.
- Begin tightening SCREW BOLT by applying downward pressure when engaging the first thread.
- Additional downward pressure may be required for installation in high strength, dense concrete.
- Continue tightening SCREW BOLT until the head is firmly seated against the washer.
- In extremely dense material, use of an impact wrench is recommended.
- Ensure SCREW BOLT is at the required embedment depth.
- Don't exceed the maximum clamping torque of 80Nm.
- The installation is now complete.

## Installation Tips

- Use quality hexagonal socket with a ratchet spanner.
- Where substrate allows, a torque controlled wrench can be used.
- During installation debris or dust created by the thread cutting action may cause some resistance to be experienced. This is easily overcome by unscrewing the BOWMAC SCREW BOLT for one turn, or more and then continue to fix to the full embedment.

**Code: BPS**  
**Packed: 10 SCREW BOLTS & washers per bag**  
**5 bags per carton outer**