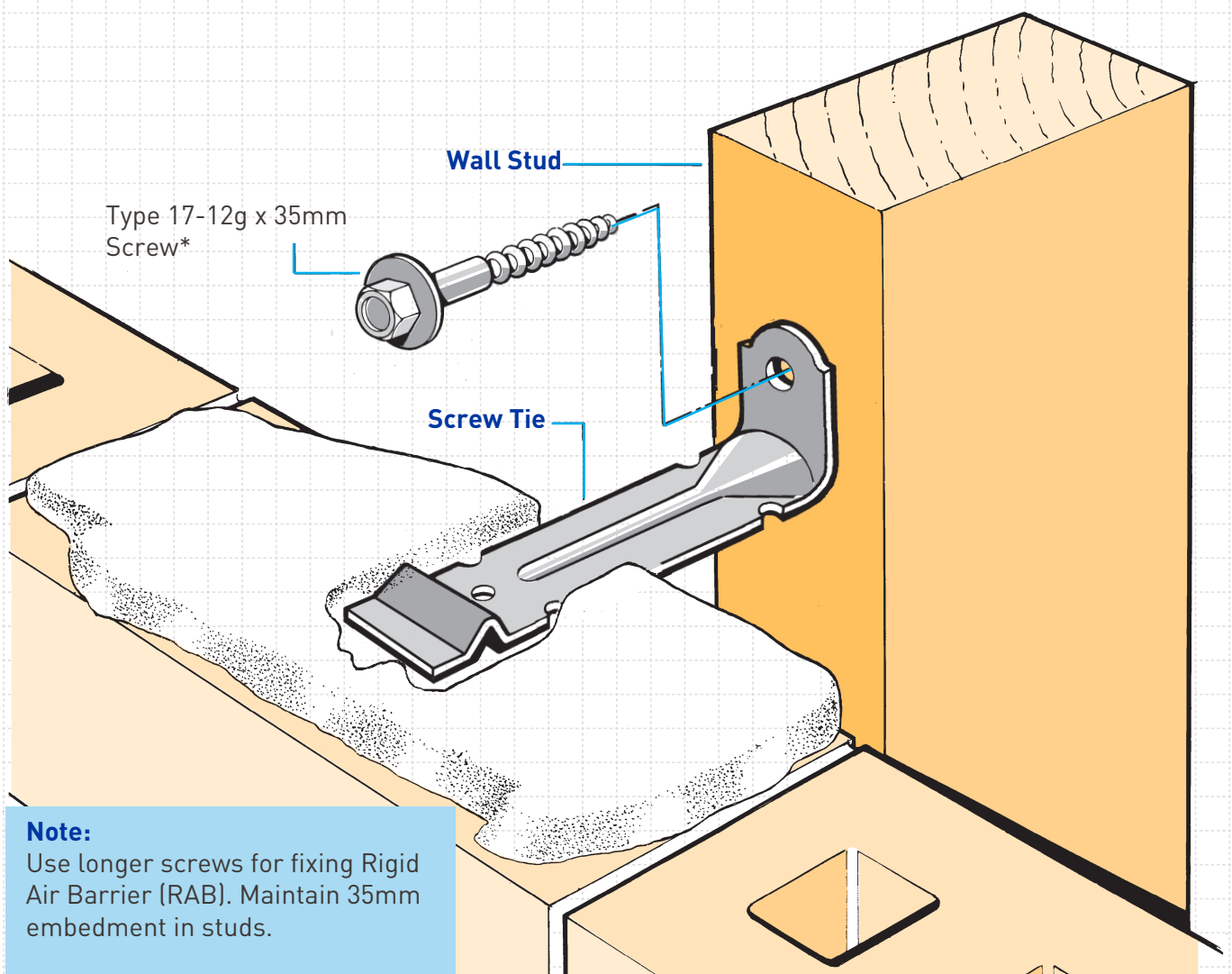


SCREW TIES

FOR BRICK VENEER FIXING

- Medium duty (EM) classification
- Tested by BRANZ in accordance with AS/NZS 2699.1:2000
- BRANZ test report number ST0725 Nov 2007
- Suitable for both “dry bedding” and encapsulated mortar
- Hot Dip Galvanised ties for Zones B & C, and Stainless Steel Grade 316 for Zone D meet NZS 3604:2011 Sect. 4 Durability
- Available in 85mm and 105mm sizes

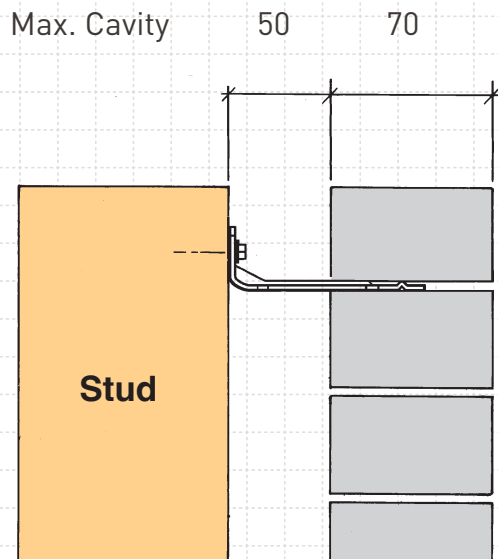


AVAILABLE FROM LEADING BUILDERS SUPPLY MERCHANTS THROUGHOUT NEW ZEALAND



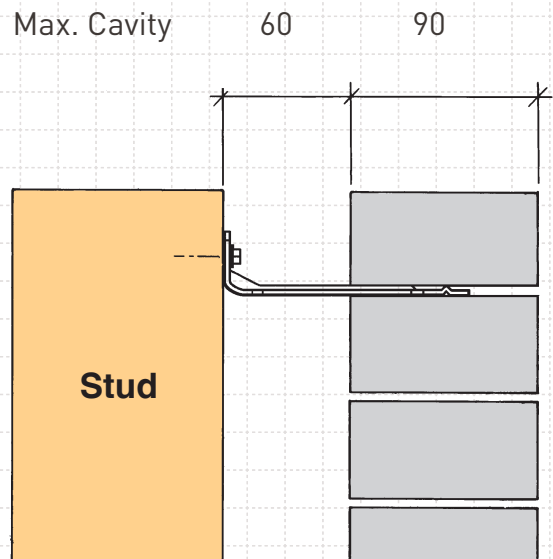
SCREW TIES

70 Series Brick



**Screw Tie Short
(85mm)**

90 Series Brick



**Screw Tie Long
(105mm)**

1. All brick work must be constructed in accordance with NZS 4210:2001 Masonry Construction:Materials and Workmanship. Screw Ties must be applied accordingly and are not to be hammered into timber framing.
2. Water shedding shoulder prevents transfer of the moisture from tie to building.
3. Nail hole for Oamaru Stone.
4. Angled neck encourages increased tie embedment in mortar.

Material: 1.2mm NZCC-SD Hot Dip Galvanised Steel
Screws: Type 17-12g x 35mm Hex Head Hot Dip Galvanised Screws
Packed: 250 ties per box including screws
Also available in Stainless Steel Grade 316 for Zone D